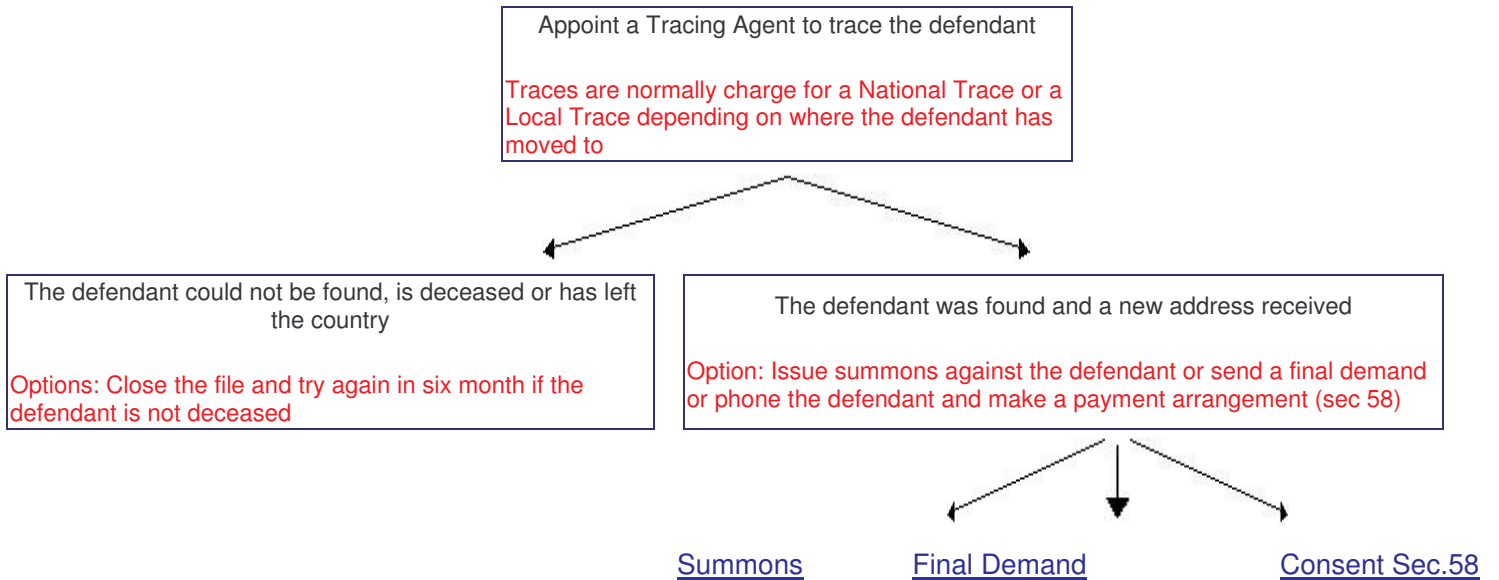


Trace



Summons

Print the [Summons documents](#) and take them to the clerk of the Magistrate's Court and get a case number and have the documents endorsed



Take the summons documents that have been endorsed by the clerk of the court to the local sheriff in the area where the defendant resides.

These documents can be posted to the sheriff.



The sheriff will serve the summons on the defendant or the defendant may have moved again



Summons was served and the Sheriff's Return of Service received

Summons not served need a new address



If for 5 days after the summons was served by the sheriff, the defendant had not lodged an intension to defend with the Clerk of the Court, application can be made for Default Judgment..

Defense Noted

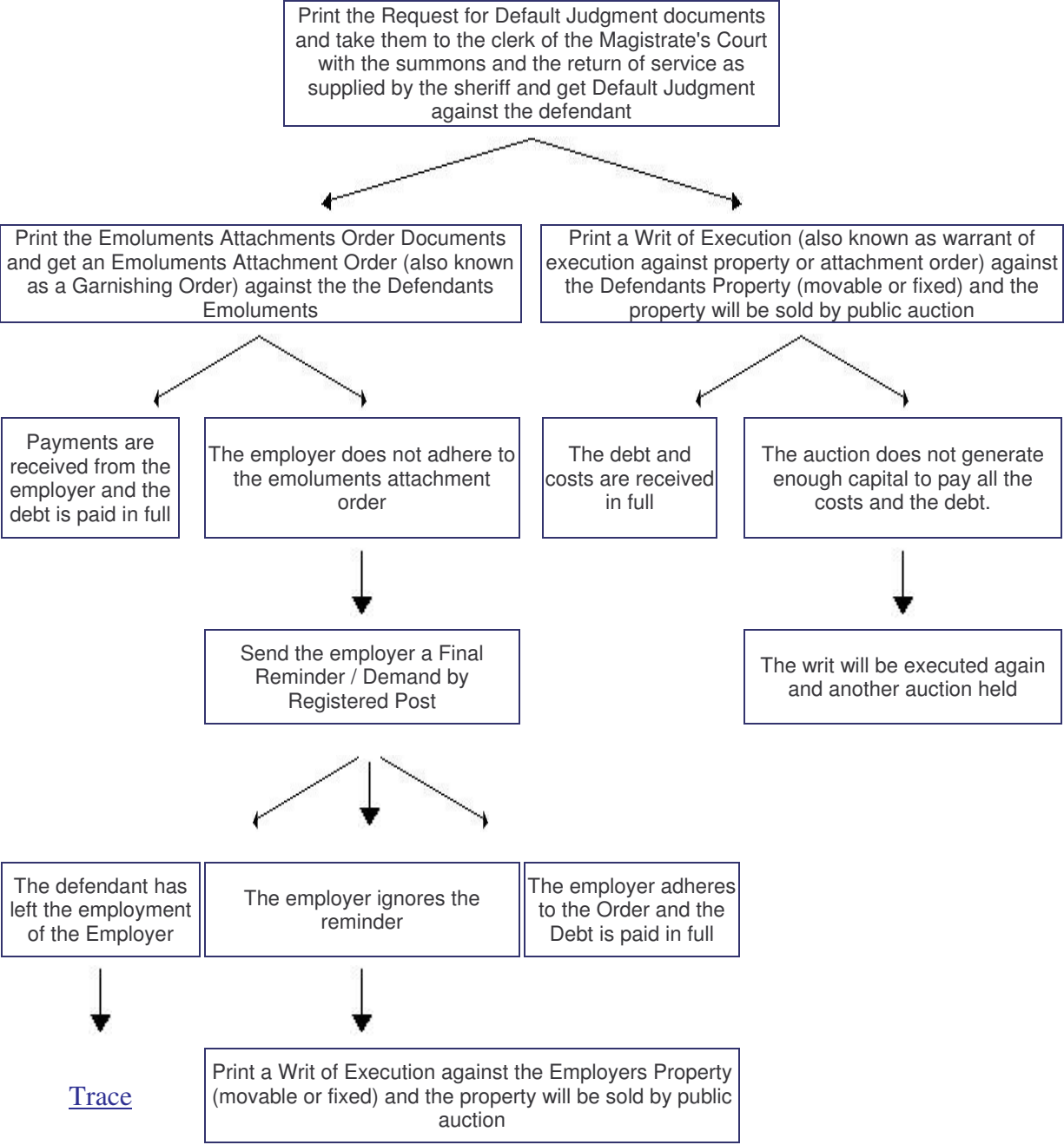
When the defendant has lodged an intention to defend the summons with the Clerk of the Court it is usually through an attorney. You will probably have to appoint an attorney.

[Trace](#)



[Default Judgment](#)

Default Judgment



Consent to Judgment Sec.58

The installment amounts offered by the defendant are acceptable and the defendant has consented to signing a Section 58 Consent to Judgment

Note: The Consent to Judgment is normally only used to get judgment against the defendant if the defendant should default on the payments

The defendant stay up to date with all the payments and the debt and costs are paid in full

The defendant defaults on the payments

Note: The Consent to Judgment is normally only used to get judgment against the defendant if the defendant should default on the payments

Use the signed Consent to Judgment Document to get judgment against the defendant

Print the Emoluments Attachments Order Documents and get an Emoluments Attachment Order (also known as a Garnishing Order) against the the Defendants Emoluments

Print a Writ of Execution (also known as warrant of execution against property or attachment order) against the Defendants Property (movable or fixed) and the property will be sold by public auction

Payments are received from the employer and the debt is paid in full

The employer does not adhere to the emoluments attachment order

The debt and costs are received in full

The auction does not generate enough capital to pay all the costs and the debt.

Send the employer a Final Reminder / Demand by Registered Post

The writ will be executed again and another auction held

The defendant has left the employment of the Employer

The employer ignores the reminder

The employer adheres to the Order and the Debt is paid in full

Trace

Print a Writ of Execution against the Employers Property (movable or fixed) and the property will be sold by public auction